

We also treat for:

- ✓ Rats
- ✓ Mice
- ✓ Wasps
- ✓ Grey Squirrels
- ✓ Fleas
- ✓ Ants
- ✓ Bedbugs
- ✓ Cockroaches
- ✓ Moths
- ✓ Pigeons
- ✓ Cluster Flies

www.oxford.gov.uk



Commercial Contracts Available

We offer competitive rates for commercial treatments and preventative contracts.

Call us now for a free commercial survey and quotation

Contact Details

Oxford Pest Service
St Aldates Chambers
St Aldates
Oxford OX1 1DS

T: 01865 249811

E: pest@oxford.gov.uk

W: www.oxford.gov.uk/pestcontrol



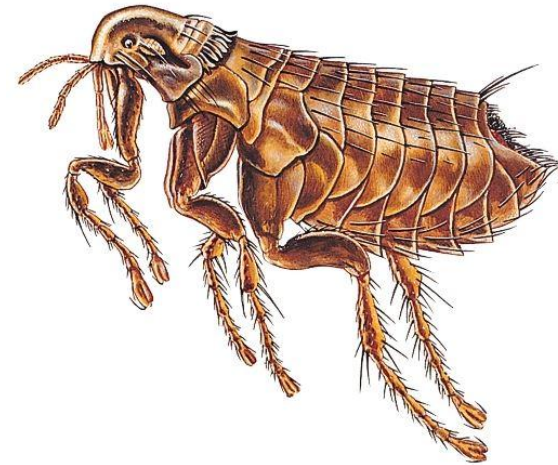
T: 01865 249811

OXFORDpestservice



Fleas

Post Treatment Advice



Post Treatment Advice

As you are aware we have treated your property for fleas today. Please take the time to read the customer information below as following this advice will greatly assist a speedy and successful treatment. Should you require any further information please contact us on the telephone number provided.

If you suspect accidental poisoning, immediately contact the Accident and Emergency Department of your local hospital, or your local GP.

The products that have been used will be indicated on the separate job sheet also given to you by the operative.

- ✓ Do not clean or vacuum the treated areas for at least 14 days. If you do you will greatly reduce the effectiveness of the spray used.
- ✓ The treatment works over a period of time; it will not affect the egg stage but will kill the larvae as they emerge. Expect to still see activity for several days.
- ✓ You must continue a programme of treatments for your pet (if any) this should be maintained throughout the year to prevent re-infestation. The animals bedding should also be washed regularly.

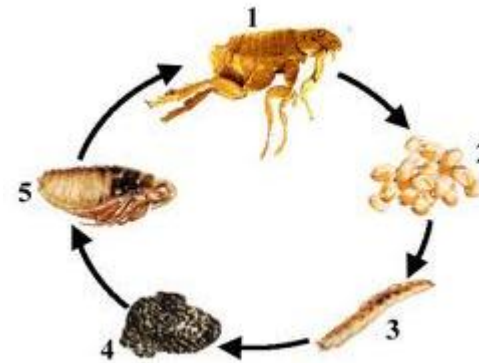
The fee paid (£80, £40 for discretions or the commercial rate) is for 2 visits (1 x survey visit and 1 x treatment visit)

Post Treatment Advice Continued

We require 1 working days notice to cancel or change any appointment or you may lose that appointment and/or forfeit the fee.

It will be up to you, the customer, to make your own arrangements for any further treatments. To do this you can contact us on 01865 249811.

OXFORD CITY COUNCIL PEST CONTROL RESERVES THE RIGHT TO WITHDRAW FROM TREATMENTS IF ANY ADVICE GIVEN IS NOT FOLLOWED UP.



Life Cycle

The female flea lays her eggs¹ on the coat but these eggs² fall off into the home environment where they develop into larvae³ which eat any flea dirt⁴ that falls off the animal and dead skin flakes & debris also. Then a pupa⁵ develops & eventually a fully functioning flea emerges & it all starts again.

Ongoing treatment and prevention

The majority of flea infestations are attributed to household pets in particular cats and dogs. It is important that you treat your pet for fleas on a regular basis to prevent re-infestation. You should consult your vet on the best treatment for your pet.

We also recommend that you wash your pets bedding routinely at a minimum of 60 degrees.

This ongoing care in conjunction with our treatment will give you the best possible protection against further problems with fleas.