

## We also treat for:

- ✓ Rats
- ✓ Mice
- ✓ Wasps
- ✓ Grey Squirrels
- ✓ Fleas
- ✓ Ants
- ✓ Bedbugs
- ✓ Cockroaches
- ✓ Moths
- ✓ Pigeons
- ✓ Cluster Flies

## Commercial Contracts Available

We offer competitive rates for commercial treatments and preventative contracts.

Call us now for a free commercial survey and quotation

## Contact Details

**Oxford Pest Service**  
St Aldates Chambers  
St Aldates  
Oxford OX1 1DS

T: 01865 249811

E: [pest@oxford.gov.uk](mailto:pest@oxford.gov.uk)

W: [www.oxford.gov.uk/pestcontrol](http://www.oxford.gov.uk/pestcontrol)

[www.oxford.gov.uk](http://www.oxford.gov.uk)



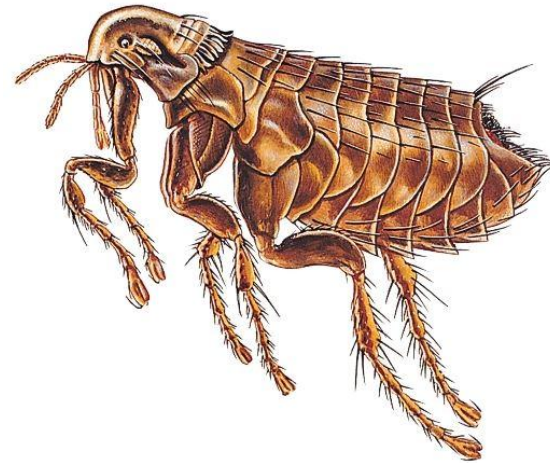
T: 01865 249811

**OXFORD**pestservice



# Fleas

## Pre-Visit Preparation Guide



## Before we arrive

Please read and keep for future reference

Before the Pest Control Officer arrives to commence treatment you must carry out the following preparations:

- ✓ To carry out a really effective treatment we will need to get access to as much floor area as possible.
- ✓ Remove all items from the floor areas of the rooms to be treated.
- ✓ Thoroughly Hoover all carpets and rugs and clean all carpet free floor areas. Pay particular attention to areas where pets may sleep or where the sun may heat an area of floor. Empty the vacuum cleaner directly into the dustbin or change the bag after cleaning.
- ✓ Make sure any pet bedding is washed and the beds are thoroughly cleaned.
- ✓ If you have a pet make sure it is being treated with an approved formulation, preferably via a vet.
- ✓ People and domestic pets must leave the rooms being treated and not be allowed to return until the insecticide is dry.

If you do not carry out these preparations the Pest Control Officer **will not** carry out the treatment and you will lose your fee.

If you are unable to prepare the room before your treatment then you must contact us to reschedule the appointment. We will require a minimum of 24 hours notice or you will lose your fee.

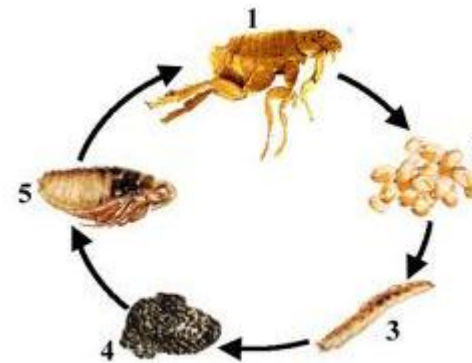
## Once we have left

After the Pest Control Officer has carried out the treatment

- ✓ Do not enter these rooms for at least two hours or until the Officer advises.
- ✓ Do not vacuum the carpets for at least 15 days to allow the insecticide time to work.

One treatment is usually sufficient to control the infestation as the products used carry on working for some weeks. The fleas should die off gradually after coming into contact with the insecticide

If there is still a problem 14 days after the original treatment you can contact our call centre to book a further treatment.



### Life Cycle

The female flea lays her eggs<sup>1</sup> on the coat but these eggs<sup>2</sup> fall off into the home environment where they develop into larvae<sup>3</sup> which eat any flea dirt<sup>4</sup> that falls off the animal and dead skin flakes & debris also. Then a pupa<sup>5</sup> develops & eventually a fully functioning flea emerges & it all starts again.

## Ongoing treatment and prevention

The majority of flea infestations are attributed to household pets in particular cats and dogs. It is important that you treat your pet for fleas on a regular basis to prevent re-infestation. You should consult your vet on the best treatment for your pet.

We also recommend that you wash your pets bedding routinely at a minimum of 60 degrees.

This ongoing care in conjunction with our treatment will give you the best possible protection against further problems with fleas.